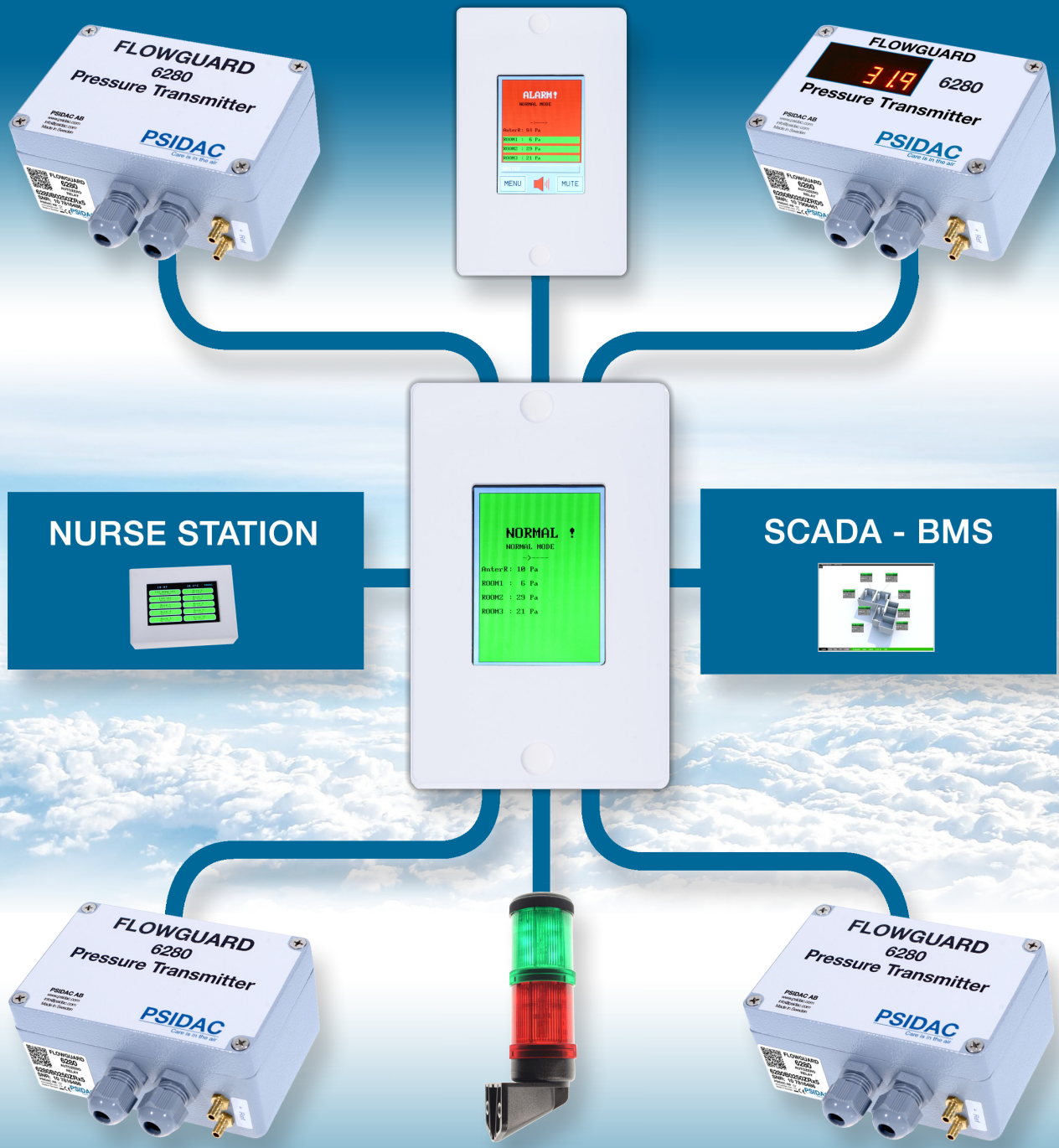


# CPS 6020/40

Dynamic monitor system folder



# PSIDAC

Care is in the Air

# CPS 6020/40

## Dynamic monitor system folder

The CPS 6020 is a monitor system for up to 2 rooms and 6040 up to 4 rooms. It's used in hospitals and processes where you need to have easy access to visible info on the important parameters for your operation and process.

### Monitor positive or Negative pressure:

CPS6020/40 operates in a Single room mode. A room where you need to know the room pressure; positive (protect the products or a patient) or a room in negative pressure (protect the surroundings from smell/dust/particles/bacteria/a sick patient).

### The CPS system is Dynamic

CPS system is flexible and ease of use for the staff. The 6020 can monitor and show alarms for 2 different rooms at the same time (6040 shows up to 4 rooms). So if you have ante-rooms, or siderooms they can be monitored as well. And when being in the surrounding rooms you have panels in these rooms as well (Slave panels) so you always see the status and alarms in all important working areas. You can add up to 10 slave panels to one master panel. The slaves can be individually configured, which makes the system even more dynamic.

### Safety

The concept is simple (therefore safe), the CPS system will normally display green when everything is ok and Red when there is an alarm condition. That combined with the high accuracy sensors that PSIDAC produce will assure a safe working environment, low cost in contamination problems, and the CPS system will give you a positive profiling and sales argument. Start informing clients/customers that you monitor your processes 24/7 for everybody's safety.

### Low installation cost

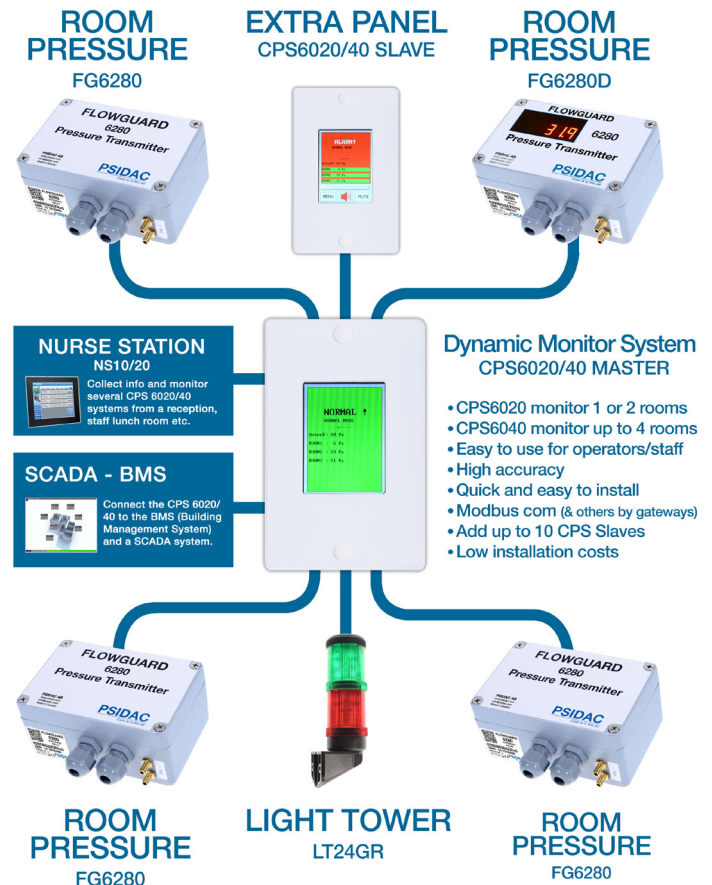
The system use intelligent sensors, and digital Modbus communication, so it's low installation cost, and easy start-up compared to traditional analog systems. Since the system is based on advanced programming it is easy to add rooms or slave panels after installation.

### Communications

The CPS 6020/40 system communicates to the BMS (Building Management System) or a SCADA-system so the measured parameters can be logged for history and trends. Alarms can be sent out by the BMS (or a dialer unit) to emails and SMS-cellphones for fast response by staff or service to minimize stop and costs. Relay (option) out for sumalarm.

### Nurse Station

Add our Nurse Station NS10 that collects and shows status of max 10 CPS / rooms. Or NS20 that shows max 20 CPS systems / rooms in the reception or staff lunchroom etc.



### Key features CPS 6020/40 Dynamic System

- + Continuous 24/7 measurement of attached sensors
- + Simple to understand for staff, Green=OK, Red=Alarm
- + Up to two rooms can be monitored by one 6020 System
- + Up to four rooms can be monitored by one 6040 System
- + Slave panels for monitors in surrounding rooms
- + Single room mode for either negative or positive pressure

### Technical data CPS 6020/40

Montage: Flush in wall, or on the wall in bracket/box. See details below.  
 Dimension: 150x100x5 (45 Mounting box) mm.  
 Display: 65x49 mm Display, LCD Color Touchscreen.  
 Panel color: Standard white (can be in custom colors)  
 Communication internal: RS485 Modbus  
 Communication external: RS485 Modbus RTU  
 Measurement recessed box: 114x90x40 mm  
 Measurement on the wall box: 150x100x40 mm  
 Power: 24 V DC @ 54 mA/ CPS 6020/40

### Type designation

Part no example: **6020MSSR1**

Model no.	Master/Slave	Type	Wall mount	Options	Com	Special
<b>6020</b>	<b>M</b>	<b>S</b>	<b>S</b>	<b>R</b>	<b>1</b>	<b>xxx</b>
4pos	1 pos	1pos	1pos	1pos	1pos	3pos
6020/6040	M/S	S/A	D/S/E	R/x	1/2/3/4	Special ver
20=Max 2 room	M=Master unit	S=Standard	D=recessed Deep	R=Relay	1=2wire Modbus	
40=Max 4 room	S=Slave unit	A=n/a	S=recessed Shallow	x=n/a (free)	2=2wire BacNet	
			E=External on wall		3=Modbus TCP	
			x=none		4=BacNet TCP	

Features & specifications are subject to change without notice.

# CPS 6020/40

## Dynamic monitor system folder



### CPS 6020

The CPS 6020 is a monitor system for up to 2 rooms at the same time. 6020 operates in a Single room mode. Attach slave panels for monitors in surrounding rooms like anteroom, hallway etc. There is a Master and a optional Slave panel. Order it with optional mounting boxes and optional alarm relay. For more info see our website, product: CPS 6020.

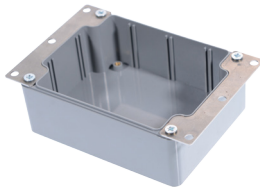
**Part no. (basic master version) 6020MSSx1**



### CPS 6040

The CPS 6040 is a monitor system for up to 4 rooms at the same time. 6040 operates in a Single room mode. Attach slave panels for monitors in surrounding rooms like anteroom, hallway etc. There is a Master and a optional Slave panel. Order it with optional mounting boxes and optional alarm relay. For more info see our website, product: CPS 6040.

**Part no. (basic master version) 6040MSSx1**



### CPS Recessed box Shallow

The 10033 recessed box is the shallow version for thinner walls, and when you don't have that many cables and connections in the CPS system. It requires a wall depth of 40 mm to fit inside the wall. Hole opening should be 115 mm height, and 90 wide.

**SKU - Part no. 10033**



### CPS Recessed box Deep

The 10030 recessed box is the deep version for more space in the wall box, for easier connection if there is many cables in the system. It requires a wall depth of 65 mm to fit inside the wall. Hole opening should be 115 mm height, and 90 wide.

**SKU - Part no. 10030**



### CPS external bracket on the wall

The 10029 external brackets for mounting on the wall, when you don't want to (or can't) make a flush wall installation. Drill a hole in this bracket on desired side, top or bottom, where the cables arrive to the CPS. The size on the wall: 154 height and 105 mm wide. It comes out from the wall 35mm, and 38mm with CPS panel installed.

**SKU - Part no. 10029**



### PPB 075 Pressure Pickup Box

The PPB 075 is a small and elegant box for picking up the pressure in a room or hallway. The tube coming from the pressure transmitter goes in and ends in the box. There is plenty of ventilation in the box to let the air/pressure in. Usually each system has two of these pressure pickup boxes, one in the room and one in reference space (e.g. hallway).

**SKU - Part no. PPB075**



### Light tower Green/Red

The LT24GR is a LED light tower for 24 VDC. Long lasting LED for being on 24/7. Green for indicating all is OK, and red when there is an alarm status to call for attention. Can be ordered with just Green, Red or both lights.

**SKU - Part no. LT24GR**



# CPS 6020/40

## Dynamic monitor system folder



### FlowGuard 6280

Uni or Bi-directional pressure sensor\*1, analogue out, modbus. CPS ready with single mode alarm function. Options: alarm relay, auto zero valve, display and 5 or 6mm+1/4" tube connectors. For more info see website, product: 6280.

SKU - Part no. (basic version) **6280B0250xxx5**



### FlowGuard 6280 with display

The FG 6280 with Display visible through the cover. Uni or Bi-directional pressure sensor\*1, analogue out, modbus. CPS ready with single mode alarm function. Options: alarm relay, auto zero valve and 5 or 6mm+1/4" tube connectors. For more info see website, product: 6280.

SKU - Part no. (display version) **6280B0250Dxx5**



### NS10 Nurse Station

The NS10 Nurse Station is a display panel for viewing up to 10 CPS systems gathered in one location, e.g. reception desk, in the staff lunchroom or hallway where everyone can see it easy. Clicking the room button displays that selected room-CPS actual readings, alarms etc. Options: Mount versions (in wall, on wall, on desk), Relay, Temp sensor. For more info see website, product: NS10.

SKU - Part no. **NS105EWxx1**



### NS20 Nurse Station

The NS20 Nurse Station is a display panel for viewing up to 20 CPS systems gathered in one location, e.g. reception desk, in the staff lunchroom or hallway where everyone can see it easy. Clicking the room button displays that selected room-CPS actual readings, alarms etc. Options: Mount versions (in wall, on wall, on desk), Relay, Temp sensor. For more info see website, product: NS20.

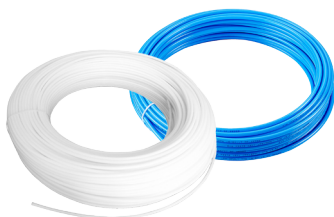
SKU - Part no. **NS205EWxx1**



### DC Power supply

We provide DC power supply for the system installations. Examples; Cabinet / electrical box: DIN rail 24 VDC - 2.5A, or a Cabinet version 24 VDC - 4.5A  
Extrenal on cord: Power adapter 24 VDC - 3.75A  
For more info see website, product: Power Supply

SKU - Part no. **NS105EWxx1**



### Tubing Polyamide PA12

We the tubes needed between our pressure transmitters and the measuring point. We have 2 colours (blue/white) for easy +/- detections in both ends. The polyamide tubes is used for Pneumatik, hydraulics, vacuum etc. The material is self-extinguishing. -40°C to +80°C. Comes in a ring of 50m. For more info see website, product: PA12

SKU - Part no. **PA121093 Blue or PA121091 White**

\*1 Unidirectional = sensor measure on one side of zero. Bidirectional = sensor measure on both sides of zero.